

WAAS CH 86237 W21A	APP CRS 213°	Rwy Idg THRE Apt Elev	5000 74 75
---------------------------------	------------------------	-----------------------------	---------------------------------------

RNAV (GPS) RWY 21

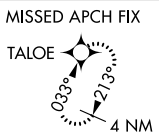
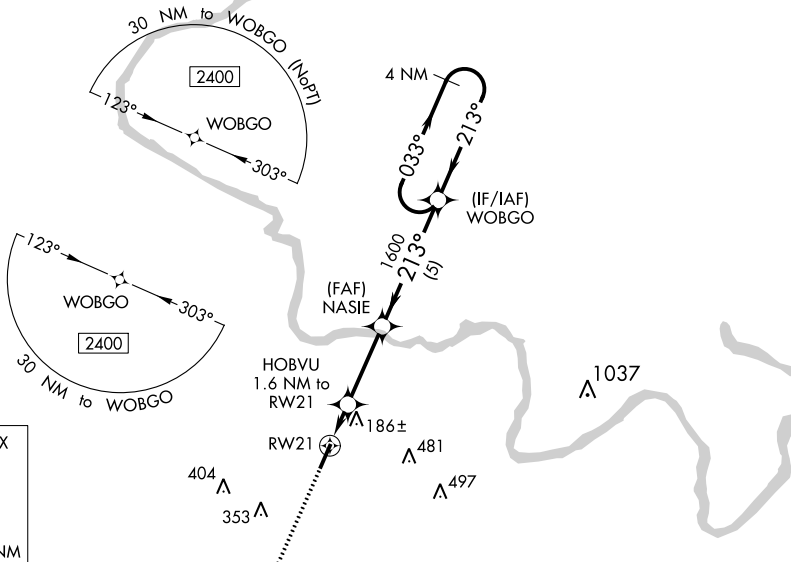
MARTIN COUNTY (M/CZ)

⚠ Baro-VNAV NA when using Rocky Mount altimeter setting. For uncompensated Baro-VNAV systems, LNAV/VNAV NA below -15°C (5°F) or above 54°C (130°F). DME/DME RNP-0.3 NA. Obtain local altimeter on CTAF; when not received, use Rocky Mount altimeter setting and increase all DA 92 feet and all MDA 100 feet: increase LPV all Cats visibility 3/8 mile, LNAV/VNAV all Cats visibility 1/8 mile, LNAV Cats C/D visibility 3/8 mile, and Circling Cat C visibility 1/2 mile and Cat D visibility 1/4 mile. Helicopter visibility reduction below 1 SM NA. Rwy 21 Straight-in and Circling minimums NA at night.

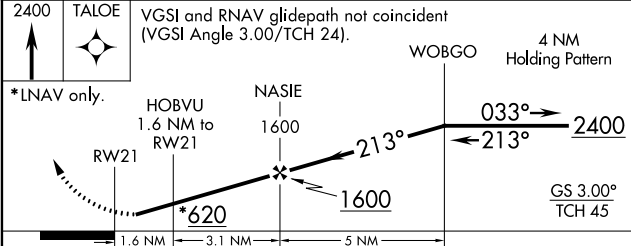
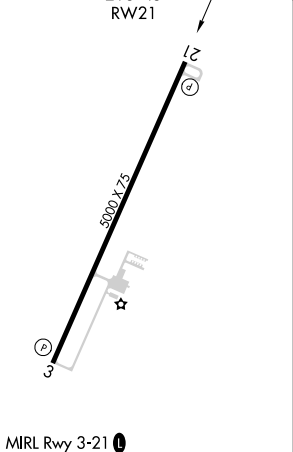
MISSED APPROACH:
Climb to 2400 direct TALOE and hold.

WASHINGTON CENTER
135.5 281.42

UNICOM
122.8 (CTAF) 0



ELEV 75	THRE 74
---------	---------



CATEGORY	A	B	C	D
LPV DA		379-1	305 (400-1)	
LNAV/VNAV DA		336-1	262 (300-1)	
LNAV MDA		440-1	366 (400-1)	
C CIRCLING	500-1 425 (500-1)	540-1 465 (500-1)	660-1½ 585 (600-1½)	840-2½ 765 (800-2½)

SE-2, 08 DEC 2016 to 05 JAN 2017

SE-2, 08 DEC 2016 to 05 JAN 2017