

WAAS CH 40037 W03A	APP CRS 033°	Rwy Idg THRE 65 Apt Elev 75	5000
--	------------------------	---	-------------

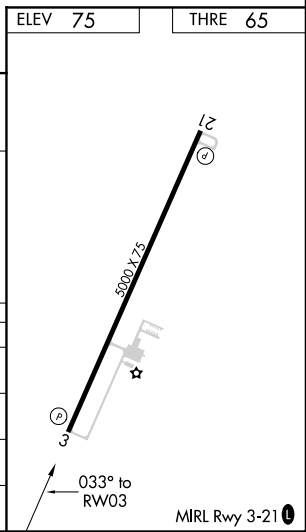
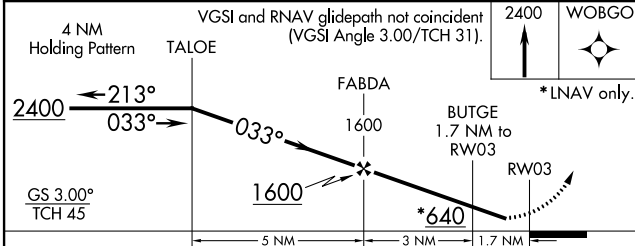
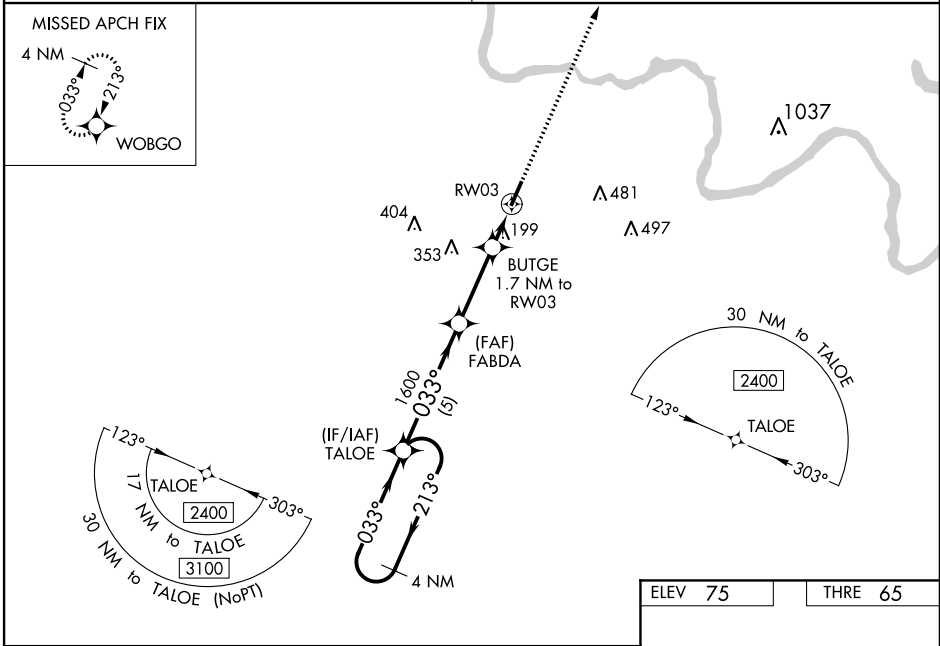
RNAV (GPS) RWY 3

MARTIN COUNTY (M/CZ)

⚠ Baro-VNAV NA when using Rocky Mount altimeter setting. For uncompensated Baro-VNAV systems, LNAV/VNAV NA below -15°C (5°F) or above 54°C (130°F). DME/DME RNP-0.3 NA. Obtain local altimeter setting on CTAF; when not received, use Rocky Mount altimeter setting and increase all DA 92 feet and all MDA 100 feet: increase LPV all Cats visibility 1/8 mile, LNAV/VNAV all Cats visibility 1/4 mile, LNAV Cats C/D visibility 1/4 mile, and Circling Cat C visibility 1/2 mile and Cat D visibility 1/4 mile. Helicopter visibility reduction below 1 SM NA. Rwy 03 Straight-in and Circling minimums NA at night.

MISSED APPROACH:
Climb to 2400 direct WOBGO and hold.

WASHINGTON CENTER 135.5 281.42	UNICOM 122.8 (CTAF) 0
--	---------------------------------



CATEGORY	A	B	C	D
LPV DA	327-1		262 (300-1)	
LNAV/VNAV DA	467-1 3/8		402 (400-1 3/8)	
LNAV MDA	460-1 395 (400-1)		460-1 3/8 395 (400-1 1/8)	
C CIRCLING	500-1 425 (500-1)	540-1 465 (500-1)	660-1 1/2 585 (600-1 1/2)	840-2 1/2 765 (800-2 1/2)

SE-2, 08 DEC 2016 to 05 JAN 2017

SE-2, 08 DEC 2016 to 05 JAN 2017